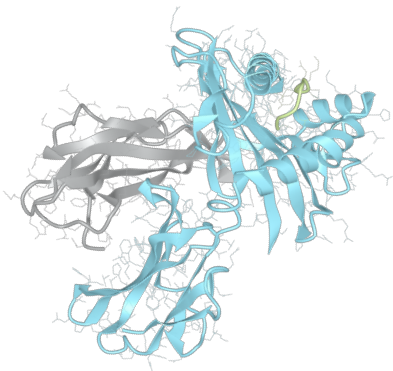


# Product datasheet



## sHLA-C\*14:02bio

Cw\*14:02, Cw\*1402, C\*1402, C1402  
Cw1402, C\*14, C14, Cw\*14, Cw14, Cw1

<b>Serological Name</b>	Cw1
<b>Peptide Load Modification</b>	Endogenous Unmodified
<b>Conjugation</b>	Biotin
<b>SKU</b>	C1402bio

### Product Description

<b>Allele Name</b>	C*14:02 B2m
<b>HLA Class</b>	HLA Class I
<b>HLA Gene Locus</b>	HLA-C
<b>Alternative Allele Name A Chain</b>	Cw*14:02, Cw*1402, C*1402, C1402, Cw1402, C*14, C14, Cw*14, Cw14, Cw1
<b>Alternative Allele Name B Chain</b>	-
<b>Description</b>	Recombinant, truncated Class I soluble Human Leukocyte Antigen (sHLA), naturally folded and glycosylated, loaded with endogenous peptides.
<b>Serological Name</b>	Cw1
<b>Serological Split</b>	-
<b>Bw4/Bw6 Assignment</b>	Bw6
<b>Bw4/Bw6 Sequence</b>	SLRNLRG
<b>Allele Frequency [World Population]</b>	
<b>A chain</b>	2.2%
<b>B chain</b>	-

### Associated products

[C1402](#)  
[C1402pe](#)

## Product Specification

<b>Product name</b>	HLA-C*14:02bio
<b>HLA Species</b>	Human
<b>Host Cell Line Species</b>	Human
<b>Clone Designation</b>	F7
<b>Tail Specification</b>	VLDL
<b>Peptide Load</b>	Endogenous
<b>Modification</b>	Unmodified
<b>Conjugation</b>	Biotin
<b>Complexity</b>	Monomer
<b>Protein Format</b>	Recombinant, truncated, soluble, non-modified, biotinylated, endogenously loaded
<b>Storage Temperature</b>	4 °C (This product should be stored undiluted)
<b>Form</b>	Liquid
<b>Concentration</b>	300.0 µg/µl
<b>Formulation</b>	PBS/0.02% Sodium Azide
<b>pH</b>	7.4
<b>Purification Method</b>	Affinity Chromatography
<b>Grade</b>	Research Use Only [RUO]
<b>Authentication Verification</b>	Sequence Based Typing

## Protein Sequences

<b>Alpha Chain Sequence</b>	CSHSMRYFST SVSRPGRGEP RFIAVGYVDD TQFVRFSDSA ASPRGEPRAP WVEQEGPEYW DRETQKYKRQ AQTDRVSLRN LRGYYNQSEA GSHTLQWMFG CDLGPDGRLR RGYDQSAYDG KDYIALNEDL RSWTAADTAA QITQRKWEAA REAEQRRAYL EGTCVEWLR R YLENGKETLQ RAEHPKTHVT HHPVSDHEAT LRCWALGFYP AEITLTWQWD GEDQTQDTEL VETRPAGDGT FQKWAAVVVP SGEEQRYTCH VQHEGLPEPL TLRVSVSTDD DLA
<b>Beta Chain Sequence</b>	IQRTPKIQVY SRHPAENGKS NFLNCYVSGF HPSDIEVDLL KNGERIEKVE HSDLSFSKDW SFYLLYYTEF TPTEKDEYAC RVNHVTL SQP KIVKWRDRM

## Related Products

[A0201bio](#)  
[A0301bio](#)  
[A2402bio](#)  
[B0702bio](#)

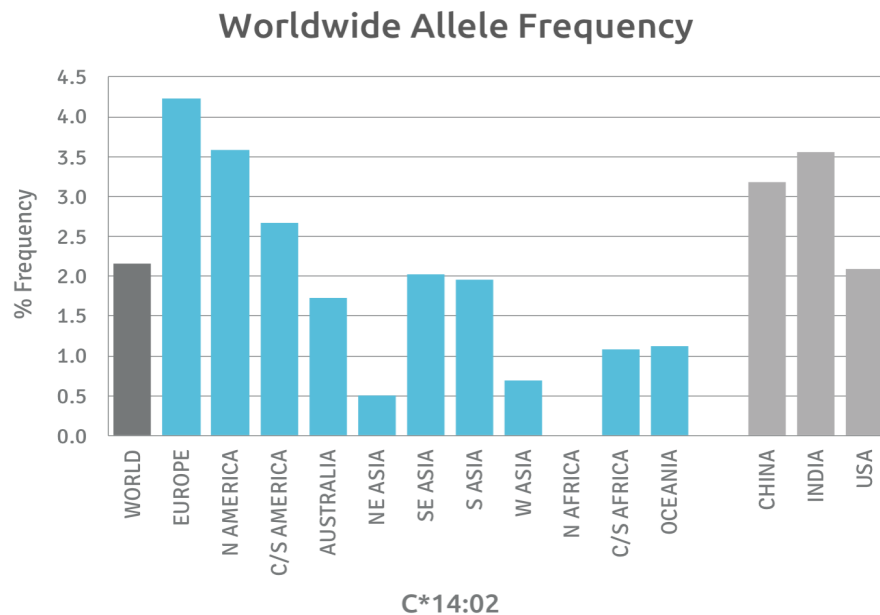
## Applications

HLA Sandwich ELISAs  
HLA Direct ELISAs  
HLA-Sera Antibody Assays  
HLA Controls in ELISA Assays  
HLA Assay Standards  
HLA Blocking Assays  
HLA Neutralizing Assays  
HLA Competition Assays  
HLA Bead Assays  
HLA Immunization Procedures

## Recommended Antibodies

W6/32  
Anti-B2m

## Allele Frequency



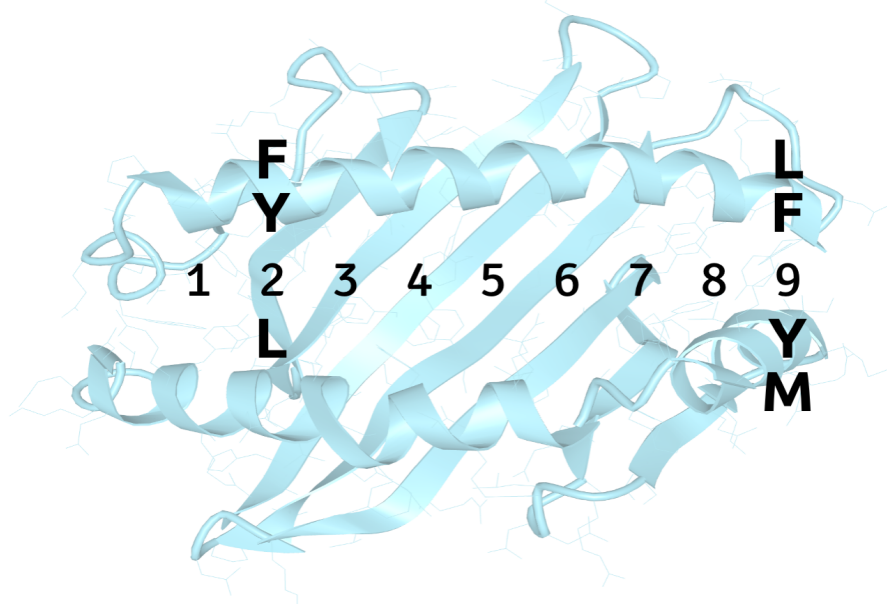
Please note:  
ALL PRODUCTS ARE FOR RESEARCH USE ONLY. NOT FOR COMMERCIAL USE IN DIAGNOSTIC PROCEDURES.  
For more information, please visit our Policies section on our website. For licensing inquiries, please contact

[licensing@hlaprotein.com](mailto:licensing@hlaprotein.com)



## Motif

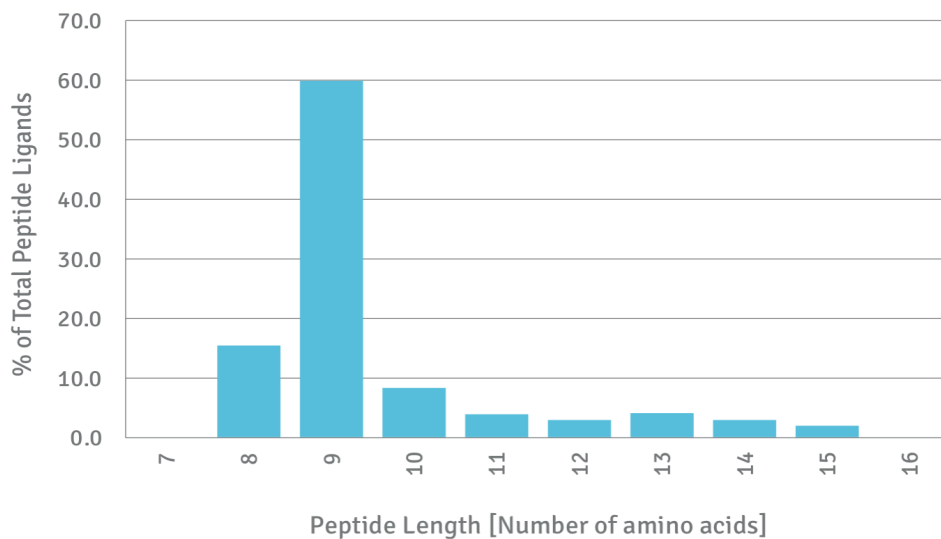
### C\*14:02 BINDING MOTIF



## Length Distribution

### HLA Length Distribution

**C\*14:02**



Please note:

ALL PRODUCTS ARE FOR RESEARCH USE ONLY. NOT FOR COMMERCIAL USE IN DIAGNOSTIC PROCEDURES.

For more information, please visit our Policies section on our website. For licensing inquiries, please contact

[licensing@hlaprotein.com](mailto:licensing@hlaprotein.com)

Eplet Assignments

C\*14:02

Eplet	Polymorphic Residues	Antibody Reactivity
1C	1C	
9S	9S	
65QKR	65Q66K69R	Yes
66K	66K	
69RT	69R73T	
73TVS	73T76V77S	Yes
76VRN	76V79R80N	Yes
76VS	76V77S	
77S	77S	
77SRN	77S79R80N	
80N	80N	Yes
95L	95L	
97W	97W	
99F	99F	
103L	103L	
113VD	113Y114D	
116S	116S	
152E	152E	
152RE	151R152E	
156R	156R	
156RA	156R158A	
163T	163T	
184H	184H	
193PV	193P194V	Yes
194V	194V	
219W	219W	Yes

